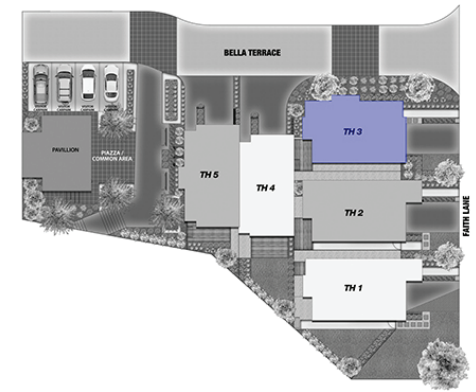
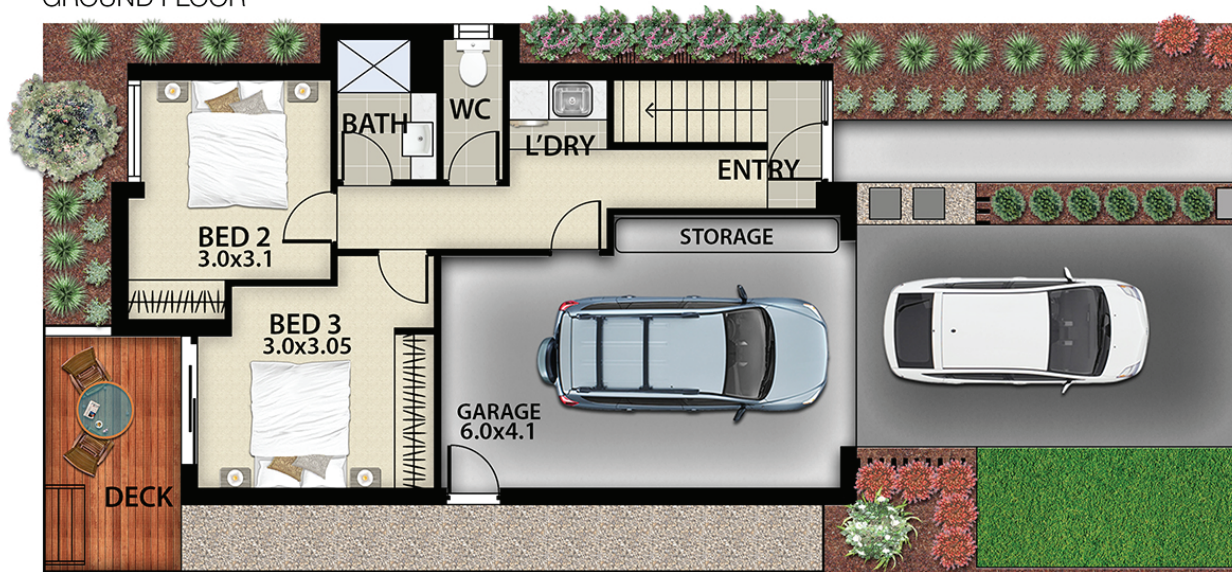




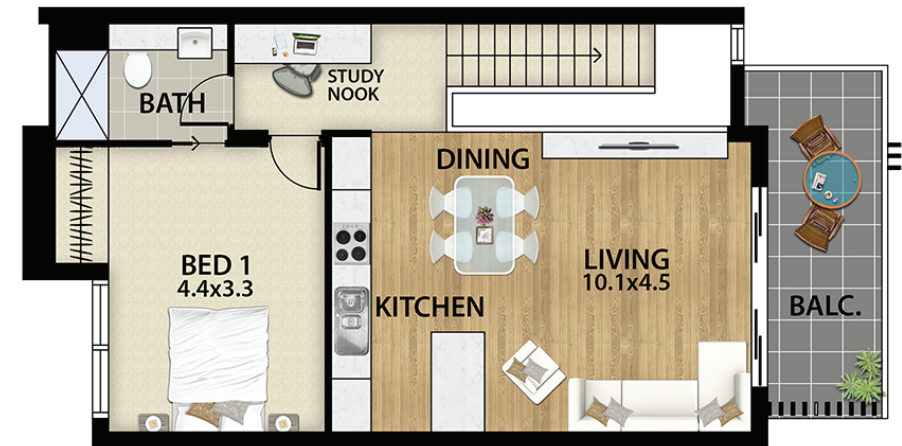
GROUND FLOOR



**3 BEDROOMS,
2 BATHROOM, 1+1 GARAGE**

TOTAL BUILDING AREA 158 m²
INCLUDING GARAGE, BALCONY & DECK

TOTAL OUTDOOR AREA 27 m²
INCLUDING BALCONY & DECK



FIRST FLOOR

MARVELLA HEIGHTS 6 FAITH LANE, BAKERY HILL, BALLARAT CENTRAL

The above site plan is an artist's impression only which include elements that are for display purposes and may not to scale. Landscaping shown is indicative only.